

Breakfast with firefighters

Words and pictures by
SANDY BURGOYNE

As last month contained a fifth Sunday, South Warrandyte Fire Brigade held a community breakfast at its Brumbys Road fire station.

"The fifth Sunday breakfast is held by the brigade as a community exercise to invite friends and family of the CFA — its members, its ex-members and other agencies ... so that they get to know the

people in the community and others in the brigade outside firefighting activities," Warren Aikman, south brigade's first lieutenant told the *Diary*.

"It falls about four times a year and we invite anyone in the community that's interested to come and see the fire brigade and have a relaxing morning.

"Families make big sacrifices to the CFA so it is to say 'thankyou' to the families

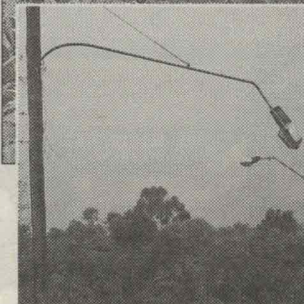
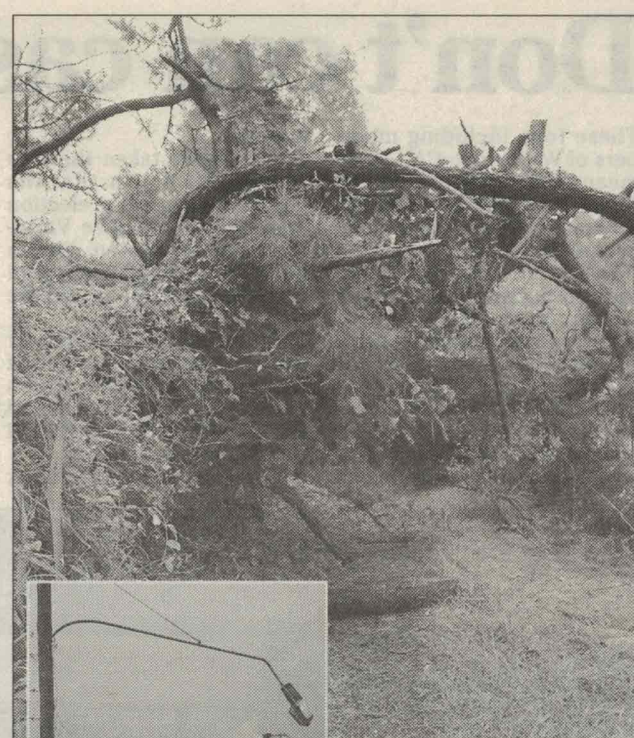
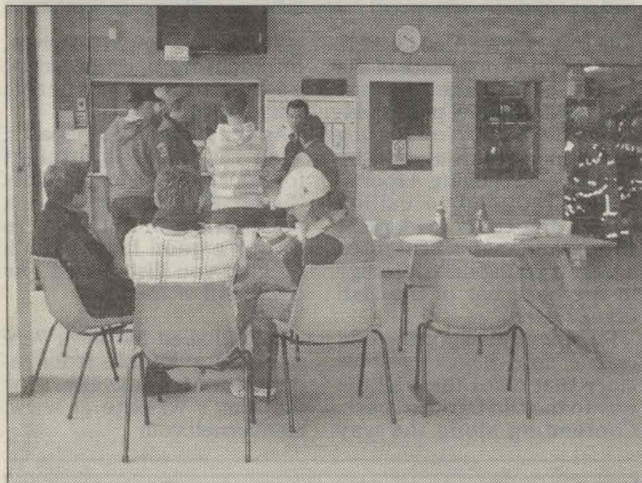
as well ... It's about the kids being involved and enjoying their time down here," he said.

Children of all ages certainly enjoyed inspecting the fire trucks. A special treat was a visit from a MFB teleboom appliance with its crew.

"That was from Fire Station 22 at Ringwood. Our brigade here interfaces with the MFB on our boundaries," Warren Aikman explained.

"They support into our area and at times we support into their area. We have assignment tables. Our assignments cover our area of turnout and we support each other in those areas."

The brigade and its supporters served up a tasty breakfast of old favourites including bacon, eggs, sausages and hash browns, with tea, coffee and muffins to follow.



This Scots pine stopped traffic in North Warrandyte last month. The only casualty (inset) was this street light. (Pictures by Sandy Burgoyne)

Tree stops traffic

North Warrandyte's peak hour traffic snarl became even worse one Tuesday night last month. A towering Scots pine on the east side of Kangaroo Ground Road, at the Research-Warrandyte Road intersection, fell across the road bending a street light and taking power lines with it.

Several teams of emergency workers were deployed to clear the road of debris and make the site safe. Darkness added to the chaos and Research-Warrandyte Road banked up past Sloan's corner. Vehicles exiting Re-

search Road had to run the gauntlet of traffic on KG Road whilst negotiating around the parked chipper trucks. The emergency crews rigged up powerful lights and continued working into the night.

The trunk and many large boughs of the pine remained on the embankment beside KG Road. Locals had taken to walking on the road as they could not use the old dirt track that runs over the embankment to Castle Road.

Our pictures show the remains of the Scots pine the next morning.

SANDY BURGOYNE